

Buildingset

OPTIMA PLUS

Delivery list



"AIG-konstrukcijas" Ltd
www.aig-familyhouses.eu
info@aig-familyhouses.eu
Phone: + 371 292 787 05



Shortly (1 story houses)

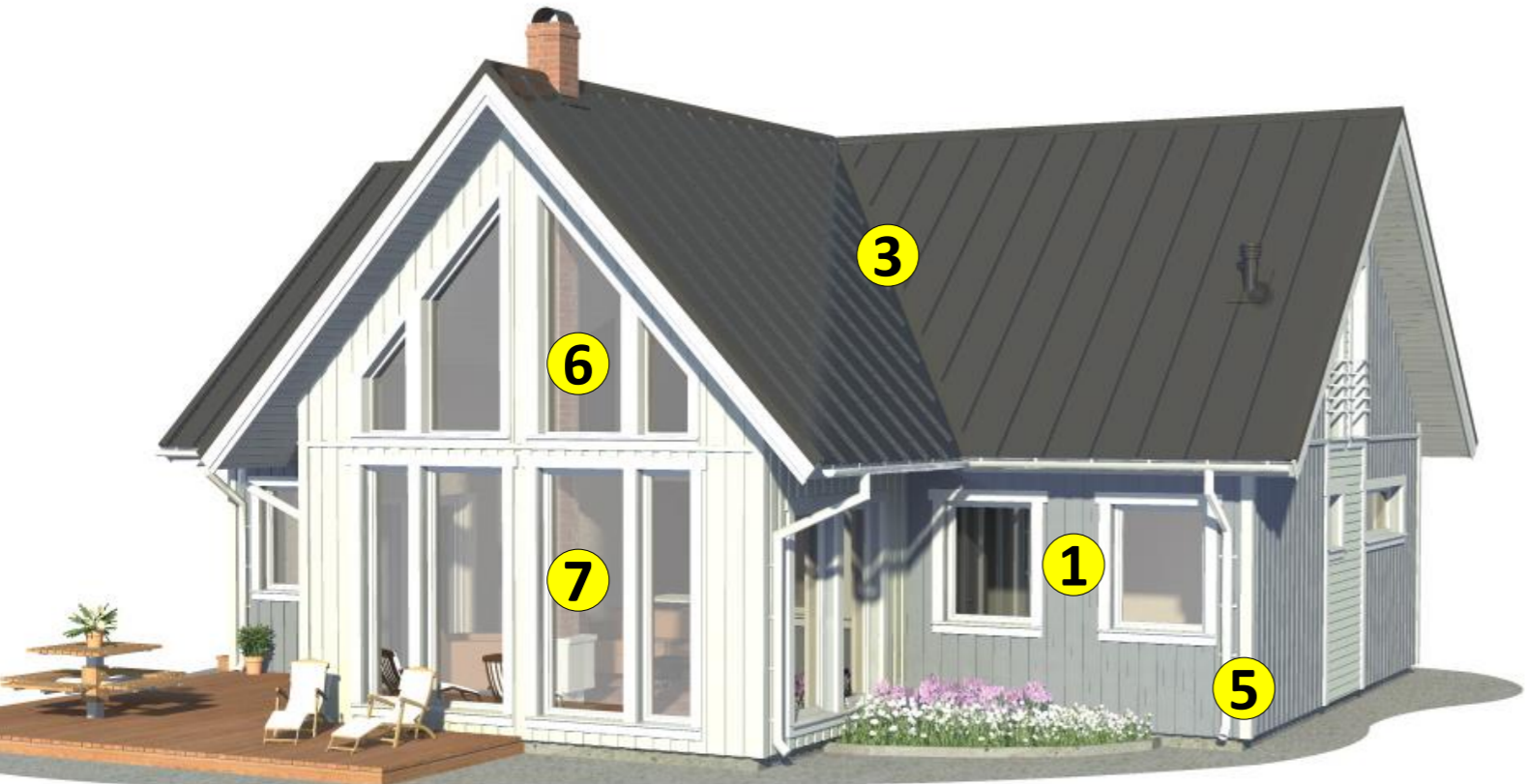
- | | |
|---|--|
| <p>1 Include
All external walls</p> | <p>5 Include
Exterior finishing for windows
and external doors</p> |
| <p>2 Include
All internal walls</p> | <p>6 Include
Windows and sills</p> |
| <p>3 Include
Roof construction</p> | <p>7 Include
External doors</p> |



This building set is completed in the manufacturer's warehouse with the amount of materials, which allow assemble the house above the foundation so that it is finished from the outside.

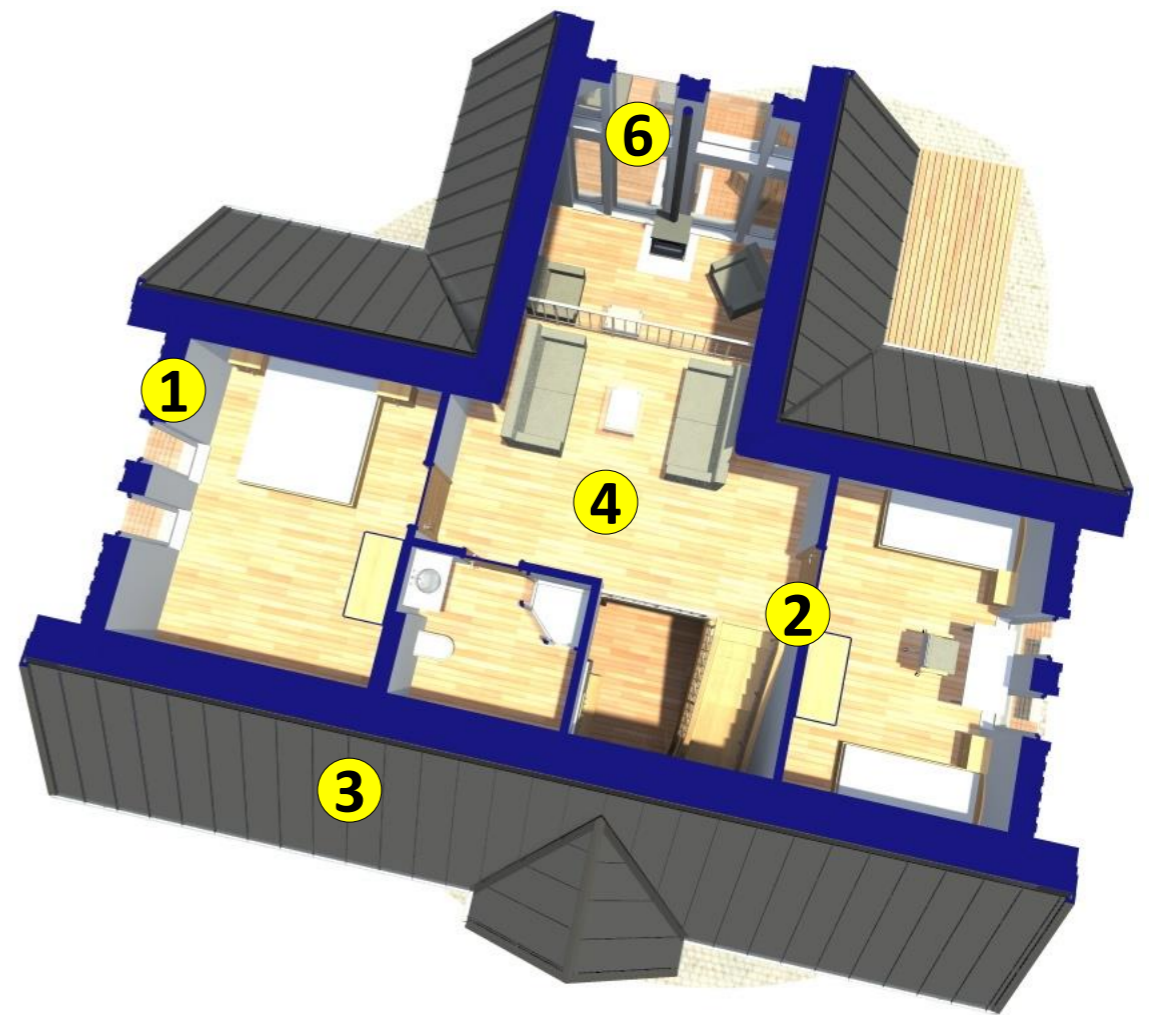
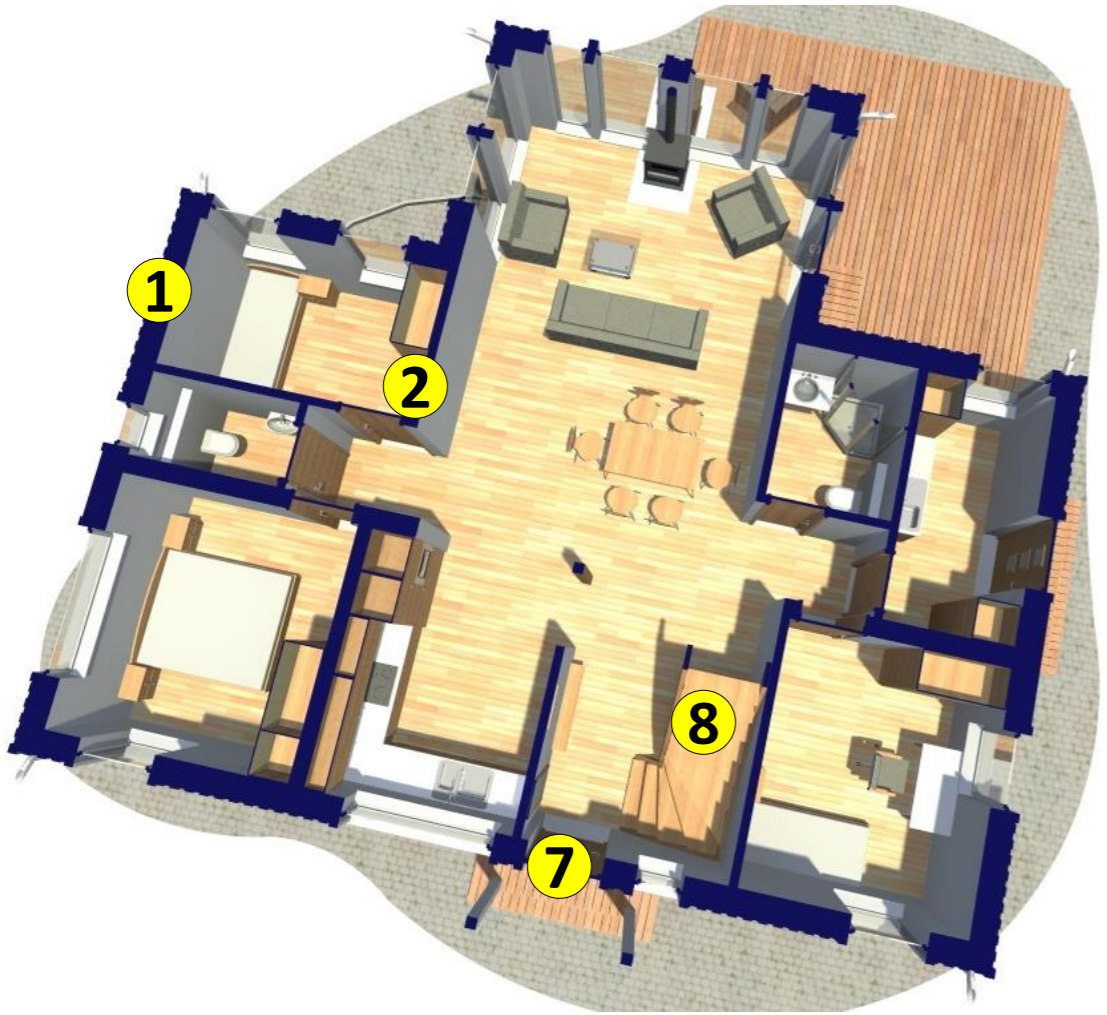
In this building set doesn't include: foundation construction, engineering communications, inside finish, staircase, delivery and assembly costs.

Shortly (1½ story houses)

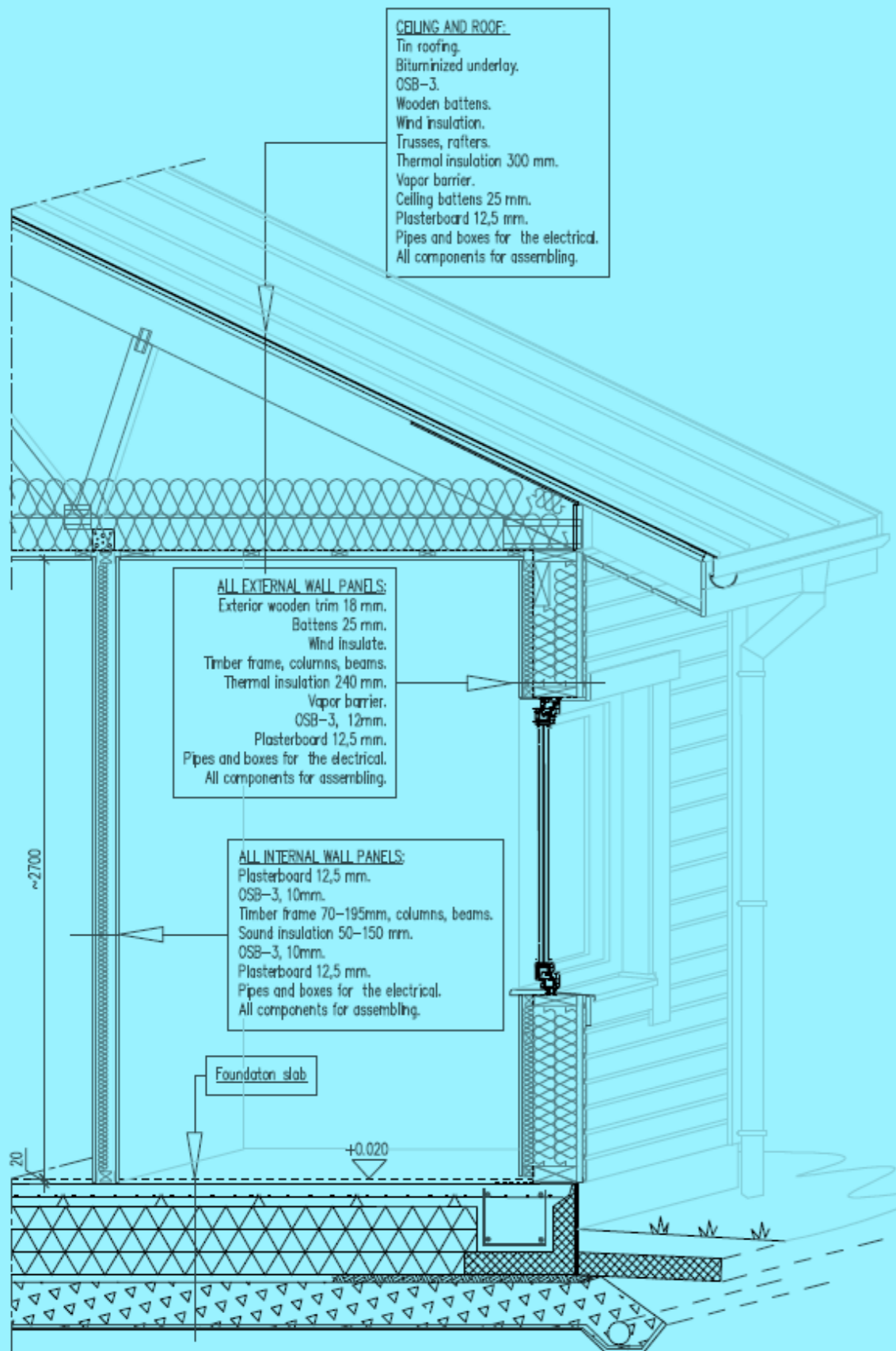


- 1 Include**
All external walls
- 2 Include**
All internal walls
- 3 Include**
Roof construction
- 4 Include**
Mezzanine construction
- 5 Include**
Exterior finishing for windows and external doors
- 6 Include**
Windows and sills
- 7 Include**
External doors
- 8 Not include**
Staircase & balustrade

This building set is completed in the manufacturer's warehouse with the amount of materials, which allow assemble the house above the foundation so that it is finished from the outside. In this building set doesn't include: foundation construction, engineering communications, inside finish, staircase, delivery and assembly costs.



CONSTRUCTION FOR 1 STORY HOUSES



Construction for 1 story houses

1

ALL EXTERNAL WALL PANELS (U~0,14 W/(m²K):

Exterior wooden trim 18 mm.
Battens 25 mm.
Wind insulation.
Timber frame, columns, beams.
Thermal insulation 290 mm.
Vapor barrier.
OSB-3,12 mm.
Plasterboard 12,5 mm.
Pipes and boxes for the electrical communication.
Insulation tape between panels.
Armed hydro isolation.
All components for assembling.
Windows PVC triple glass, internal sills, external sills.
External doors – “Jeldwen” Function $U \leq 0,8 \text{ w/m}^2 \cdot \text{K}$.
Exterior finishing for windows and external doors with wooden trim.
Internal finishing for windows and external doors with plasterboard.

2

ALL INTERNAL WALL PANELS:

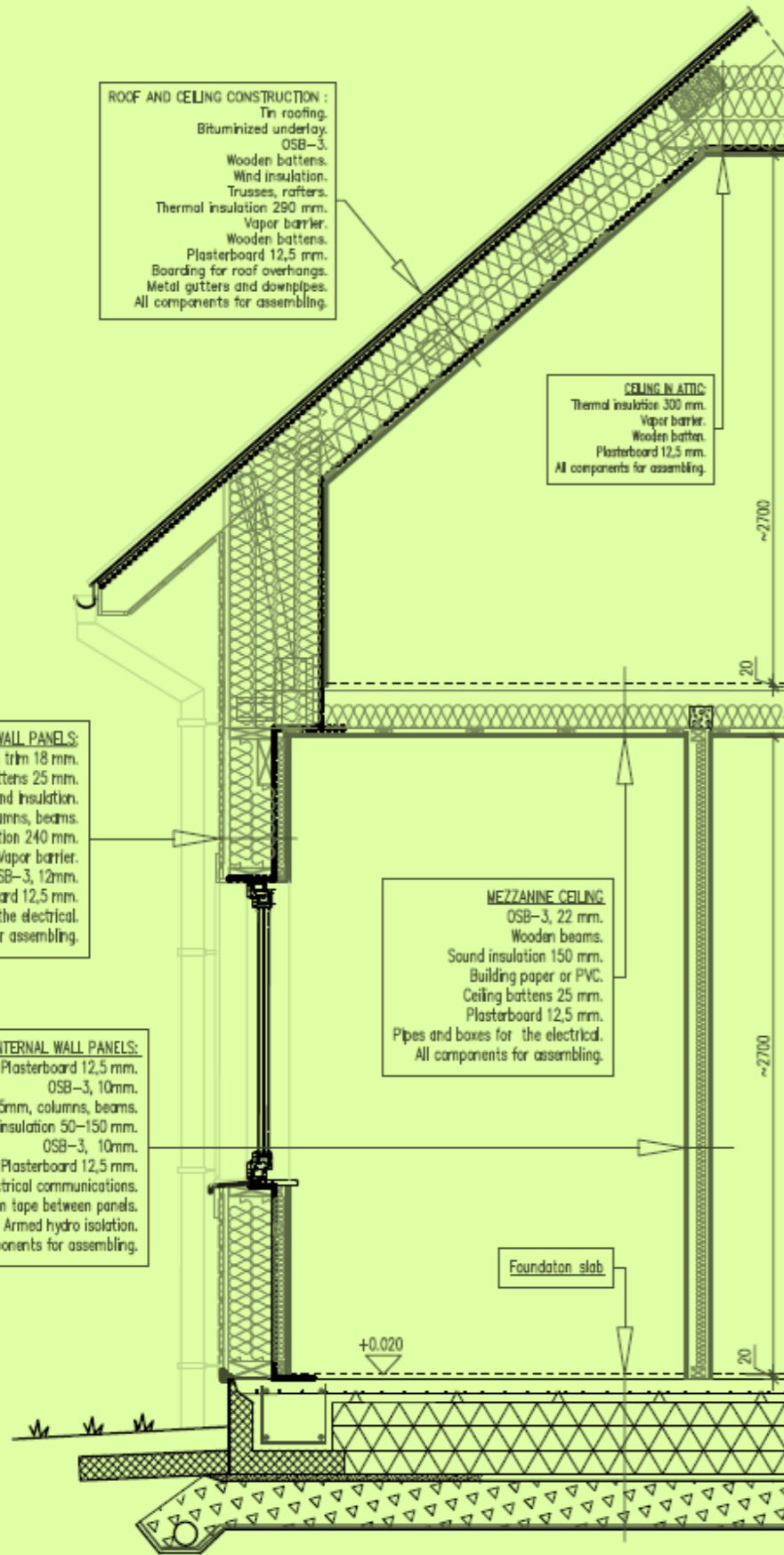
Plasterboard 12,5 mm.
OSB-3, 10mm.
Timber frame 70-195mm, columns, beams.
Sound insulation 50-150 mm.
OSB-3, 10mm.
Plasterboard 12,5 mm.
Pipes and boxes for the electrical communications.
Insulation tape between panels.
Armed hydro isolation.
All components for assembling.

3

ROOF AND CEILING CONSTRUCTION :

Tin roofing.
Bituminized underlay.
OSB-3 our battens.
Wooden battens.
Trusses, rafters.
Thermal insulation 350 mm.
Vapor barrier.
Wooden battens.
Plasterboard 12,5 mm.
Boarding for roof overhangs.
Metal gutters and downpipes.
All components for assembling.

CONSTRUCTION FOR 1½ STORY HOUSES



Construction for 1½ story houses

1

ALL EXTERNAL WALL PANELS (U~0,14 W/(m²K):

Exterior wooden trim 18 mm.
 Battens 25 mm.
 Wind insulation.
 Timber frame, columns, beams.
 Thermal insulation 290 mm.
 Vapor barrier.
 OSB-3, 12 mm.
 Plasterboard 12,5 mm.
 Pipes and boxes for the electrical communication.
 Insulation tape between panels.
 Armed hydro isolation.
 All components for assembling.
 Windows PVC triple glass, internal sills, external sills.
 External doors – “Jeldwen” Function $U \leq 0,8 \text{ w/m}^2 \cdot \text{K}$.
 Exterior finishing for windows and external doors with wooden trim.
 Internal finishing for windows and external doors with plasterboard.

2

ALL INTERNAL WALL PANELS:

Plasterboard 12,5 mm.
 OSB-3, 10mm.
 Timber frame 70-195mm, columns, beams.
 Sound insulation 50-150 mm.
 OSB-3, 10mm.
 Plasterboard 12,5 mm.
 Pipes and boxes for the electrical communications.
 Insulation tape between panels.
 Armed hydro isolation.
 All components for assembling.

3

ROOF AND CEILING CONSTRUCTION :

Tin roofing.
 Bituminized underlay.
 OSB-3 our battens.
 Wooden battens.
 Wind insulation.
 Trusses, rafters.
 Thermal insulation 340 mm.
 Vapor barrier.
 Wooden battens.
 Plasterboard 12,5 mm.
 Boarding for roof overhangs.
 Metal gutters and downpipes.
 All components for assembling.

4

MEZZANINE CEILING:

OSB-3, 22 mm.
 Wooden beams.
 Sound insulation 150 mm.
 Building paper or PVC.
 Ceiling battens 25 mm.
 Plasterboard 12,5 mm.
 Pipes and boxes for the electrical.
 All components for assembling.

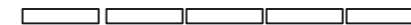
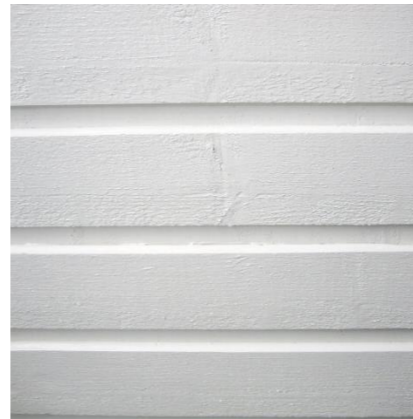


1 Exterior wall panelling

We mainly use coating systems that have proven reliable in Nordic conditions from different well known European suppliers, e.g. Teknos, Tikkurila, Akzo Nobel and others. For cladding with planed and finesawn surface.

Tinting can be done according to all major exterior colour charts.

- Opaque painted – basecoat and one or two layers of decorative paint
- Translucent painted – base impregnation and one or two layers of decorative stain



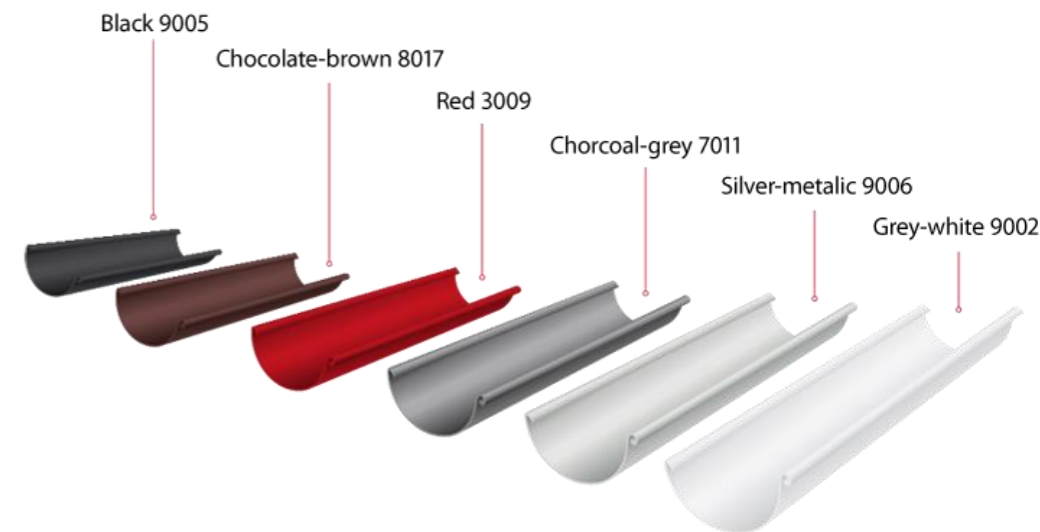
Exterior wall panelling
18x145 mm



Exterior wall panelling and soffit
boards 18x120 mm











Tinting can be done according
to all major exterior colour
charts.

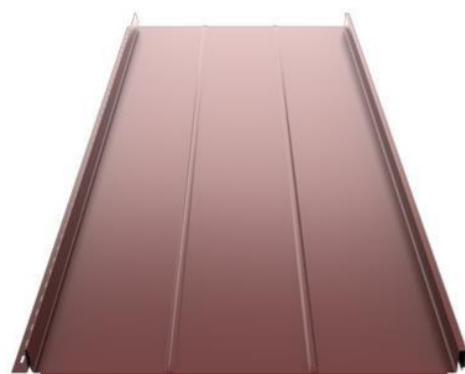


Water drain system

3

Tin roofing

- | | | | |
|---|-------|--|-------|
|  | RR33 |  | RR887 |
|  | RR23 |  | RR750 |
|  | RR22 |  | RR21 |
|  | RR946 |  | RR947 |





6 PVC windows with windowsills

The carefully designed construction details of the Kombisystem S 9000 allow it to achieve thermal conductivity ratios of $U_w = 0.96$ W/m²K. The six-chambered construction of the frame and leaf guarantee excellent insulation and noise blocking.



Windowsills



Internal windowsills are made from high quality laminated chipboard.



External tin windowsills are an ideal solution for outdoor use. They are made of tin.



7 Exterior doors

The Jeld-wen portfolio includes fully certified internal and external doors in a range of sizes, styles, materials, finishes, veneers, colours and functionalities. Many are available as doorsets, complete with frames and fittings and customisation options.



**FUNCTION
F186 W28**



**FUNCTION
F1896 W84**



**FUNCTION
F2090**

White
NCS S 0502-Y

Light grey
NCS S 3005-R80-B

Dark grey
NCS S 7502-B



**FUNCTION
F1894**



**FUNCTION
F2054 W53**



**FUNCTION
F2053 W83**

Red
NCS S 5040-Y60R

Brown
NCS S 8005-Y20R

Blue
NCS S 5020-R90B



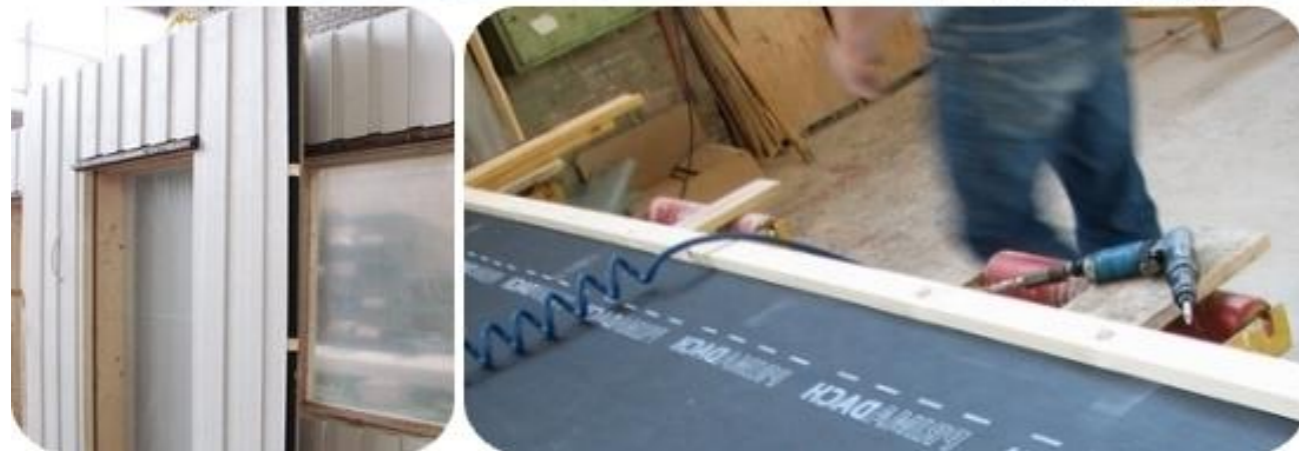
Glazing «Kura»



Glazing «Satiin»



Glazing «Clear»



Additional explanations.

1. This building set doesn't include : foundation construction, engineering communications, inside finish, staircase, delivery and assembling costs.
2. The pictures in this description have indicative character.
3. Depending on supplier price changes, the cost of construction set may vary.
4. Depending on the supplier's material assortment and specifications changes, the materials can change, which does not deteriorate the properties of the product.
5. According to the individual needs of the client, building sets, their contents and quantities of materials may vary.
6. "AIG-konstrukcijas" provide assembling services in the following ways:
 - a) We provided assembling scheme for local assemblers,
 - b) We appoint a engineer, who leads the local assemblers work in agreed time,
 - c) "AIG-konstrukcijas" full assembling service:" everything that has been delivered is assembled".



"AIG-konstrukcijas" Ltd
 "Bērzkalni", Ikšķiles novads, LV-5052, Latvia.
 Janis Jansons
 Phone: **+ 371 292 787 05**
 E-mail: info@aig-familyhouses.eu

